



**ABC LEISURE GROUP LTD**

**JOB DESCRIPTION**

---

Job Title:	Marina Technician
------------	-------------------

---

Reports To	The Marina Manager
------------	--------------------

---

Who Reports To	The Marina Operations Director
----------------	--------------------------------

---

Number of Subordinate Staff:	0
------------------------------	---

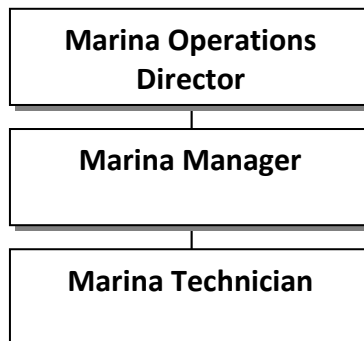
---

This is intended as a general indication of the main responsibilities of the job and does not include detailed instructions as to how the tasks are undertaken.

**JOB PURPOSE**

To carry out the various duties needed to operate and maintain the marina services and a hire fleet. Maintain and repair canal boats to maximise the life of boats and equipment, and to minimise mechanical failures. Instruct customers in the safe operation of the boat, its equipment and the use of the inland waterways system. To undertake varied works on boats and equipment for private customers.

**ORGANISATION CHART**





## **NATURE AND SCOPE**

ABC Leisure Group Ltd are operators of marina and boat repair facilities, boat building, and narrowboat hire fleets. The role of the Marina Technician is to support these 7 day a week operations by undertaking varied marina duties and the maintenance and repair of boats and equipment, at both the base and canal side. Providing cover for breakdowns on a rota basis both in and out of normal working hours. Technicians are also required to operate yard sales and provide instruction on the safe use of the boats and their equipment to customers.

Marina Technicians will often be at the front line representing the company when dealing directly with customers on handovers, callouts, boat repairs, and other marina activities. The job is varied requiring flexible working and the ability to work on own initiative with minimal supervision.

## **MAIN ACCOUNTABILITIES**

- 1 The basic fault finding, maintenance, servicing and repair of diesel engines and generating equipment, marine gearboxes, steering systems and stern gear.
- 2 The basic fault finding, maintenance, servicing and repair of 12v, 24v and 240v electrical equipment.
- 3 The basic fault finding, maintenance, servicing and repair of plumbing, waste disposal and LPG installations.
- 4 General maintenance, servicing and repair of the marina and boats including welding, painting, varnishing, carpentry and cleaning.
- 5 The maintenance and operation of shore based installations and equipment including pump out facilities, vending of water, diesel and LPG gas.
- 6 Attendance to breakdowns and repairs away from the base operations both in and out of normal working hours.
- 7 The demonstration of, and instruction on, the safe use and handling of both boats and equipment to customers.
- 8 Undertake any other duties, within the scope of the job, as directed by line management to maintain the efficient working of the Business.



## **EMPLOYEE SPECIFICATION**

- The ability to demonstrate competence in the Marina Technician core skills.
- Have a working knowledge of mechanical, electrical, plumbing, heating and LPG systems and equipment options relevant to the marine industry.
- The ability to complete forms and records legibly.
- Prepared to wear and maintain company uniform.
- Good interpersonal and verbal communication skills with the ability to deal with customers in sometime stressful situations.
- Prepared to work flexibly as part of a small team (weekend working required and 24 hour callout roster required).
- Organised and able to work on own initiative with minimal supervision.
- Supply and maintain in safe condition own hand tools to the list provided.
- Hold a RYA Helmsman certificate and undertake customer care training.
- Prepared to undertake training to develop skills and knowledge of the industry.
- Hold a valid UK driving licence (minimum category B) with access to own transport with insurance that covers 'business use' to attend service calls should a company vehicle not be available.
- Geographical knowledge of the local canal system with the ability to use a map to locate boats from minimal information.